

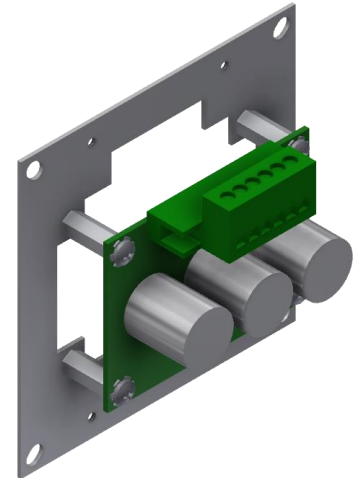
IMPULSE RELEASE MODULE

DESCRIPTION

The Impulse Releasing Module (P/N 10-2748) provides the primary interface between the supervised releasing circuit(s) of a Fike fire suppression system and the Impulse Valve Operator (IVO); which is used to release the fire suppressant agent from an impulse valve container. The IRM is equipped with three capacitors that receive a constant charging current from the releasing circuit of the control panel. When fully charged, the module is capable of firing a single IVO. Upon circuit activation, the output circuit reverses its output voltage polarity, causing the energy in the capacitors to be released to the Impulse Valve Operator.

Each IRM is equipped with a red LED to provide positive indication that the module is in the active (release) state.

Note: The IRM is provided as part of the IVO Kit (P/N 70-279) and does not need be ordered separately if ordering the kit.



SPECIFICATIONS

Current Consumption	+24V Supervisory 20.0 ma (during capacitor charging) 3.0 ma (after capacitor is charged) -24V Activated -37.0 ma (LED active)
Temperature	32 to 130°F (0 to 54.4°C), 93% maximum humidity
Module Wiring	Control panel to IRM connections are supervised and power-limited Impulse Valve Operator (IVO) connection is non-supervised and power-limited
Compatible Actuation Devices	02-12728, Impulse Valve Operator (IVO)
Compatible Releasing Panels	SHP PRO®, Cheetah® Xi, Cheetah® Xi 50

<p>APPROVALS:</p> <ul style="list-style-type: none"> • FM • UL • CSFM: SHP Pro 7165-0900:0135 • CSFM: Cheeta Xi & Xi50 7165-0900:0149 • City of New York COA #6062
--



Note: A maximum of six IRM's, wired in parallel, can be connected to each panel's releasing circuit.